



November 2010

WASHrag

N E W S L E T T E R

Watercolor Art Society - Houston

From the President

By Jerrie Gast, *President*

As summer turns into fall, we are reminded that much goes on and we need to jump aboard and enjoy the fun-filled atmosphere and activities in our WAS-H Building. Our Membership Exhibit is right around the corner, which means the holiday season is not far away.

A good day out for a group of your friends would be to have lunch and browse around the building from 10:00 to 3:00. I have noticed Gerry Finch and her group here several times during the year. She's one of our wonderful artists showing off our facility and enjoying the current show in the gallery. You just never know who is looking your work over.

On a fourth Friday, while painting upstairs, we heard some new voices downstairs, people we did not know. How fortunate to meet Phillip Hubble and his wife, now residing in Houston, who brought their niece from Birmingham, Alabama, just out for the day and stopping by for a visit. Look for his work in the Annual Members Exhibit and International Exhibition.

November's reception is to honor our founding and charter members. We would not be here except for their vision. Come to the reception to celebrate our beginning and where we are today.

Pick up a donation slip located in the Gallery and donate a painting to the Make-A-Wish Foundation auction in December. Linda Vanek has that well under way, and what a worthwhile charity that is. December is, as always, our small painting show and Christmas party. Make sure you join us for that.

(continued on page 3)



Our First Home was an office at 1005 Bomar.

Many programs and activities which are now the norm for us were started in those years. We had a steep learning curve to accommodate regular exhibitions, classes, outreach and painting sessions.

But most of all we wanted a home.

Having a "friend in high places" (i.e., Past President Ken Duff of WAS-H and now President of The Art League of Houston) helped us achieve this goal, for the summer of 1980 found WAS-H with an office in the Art League's classroom building. It was only one room, but it gave us an address (1005 Bomar) and a telephone number (713-524-6736). How wonderful! It afforded us communication with the outside world, which had been unable to find us or to get in touch with us.

A year later, on June 1, 1981, member Polk Griffin was hauling all our possessions in his pickup truck because we were "movin' on up" to 1735 Sunset Blvd. Thanks to member Mary Wood

(continued on page 6)

The '80s at WAS-H

By Margaret Bock & Marsha Harris

This was a time of growth for WAS-H.



"Movin' on Up" to Upstairs Gallery and Studio I at 1735 Sunset Blvd.

Calendar

Board Meeting – Oct. 4 10:00 am

Annual Members Exhibit Take-In
– Oct. 8, 10 am – 3 pm., Oct. 9, 10 am – 12 noon

Paint-Out – Oct. 9, 8:30 am - 3:30 pm

General Meeting - Oct. 10, 1:30 pm,

Demo – Dale Laitinen

Dale Laitinen Workshop – Oct 11-15, 9:30 am – 3:30 pm

Gallery Reception – Oct. 15, 6-8 pm

Paint-In – Oct. 23, 9:30 am – 3:30 pm

Wed. Figure Labs – 12:30-3:30 pm

Open Studio – Oct. 22 1-3 pm

WAS-H office
1601 West Alabama at Mandell
Open Tuesday-Saturday
10:00 am to 3:00 pm.
For information please contact:
Martin Butler, Administrative Assistant
713-942-9966

www.watercolorhouston.org
email: was-h@sbcglobal.net

WASHRAG INFORMATION

DEADLINE for copy, photographs and advertising for the *Washrag* is 4:00 pm, the 5th of each month except June and December. Material not received by the deadline will appear in the next month's *Washrag*. Please submit items via email or typed.

ADVERTISING RATES

Effective September 2001

Full page (7.5" by 10") \$75

Half page (7.5" by 4.7") \$50

Quarter page (3.7" by 4.7") \$25

One column (30 words) \$15

Area Teachers Listing \$25 (per year)

Payments for *Washrag* ads must be received no later than the 10th. Please mail check to WAS-H.

Column ads should be typed. All other ads must be print-ready. Photos must be 300 dpi.

Submit material to:

WAS-H 713-942-9966

1601 West Alabama, Houston, TX 77006,

or via email to our newsletter editor, Rosalie Ramsden, ramsdendesign@earthlink.net. Please put WAS-H in subject line of your email.

Wednesday Model Session

The Wednesday Model Lab group will continue to meet every Wednesday, 12:30-3:30 (unless there is a workshop scheduled) at WAS-H. Please email me

crensink.art@att.net, and I will let

you know the model each week before the session. So y'all come with your drawing and painting gear and do your own thing for three quiet hours of model time. It is a wonderful opportunity. Carol Rensink, 713-524-5146.



Recent model for Wednesday model lab group.



General Meeting, October 10 Social 1:30, Meeting 2:00 pm Demo - Dale Laitinen

General Meeting Demo with Dale Laitinen on October 10, 2010, at 1:30 pm



you will want to make sure to attend his exciting demonstration at our General Meeting.

We are so excited to have Dale Laitinen as our Demo Artist for our General Meeting on October 10, 2010. He will also be our Juror and Workshop Instructor for the Annual Membership Show in October. The National Watercolor Society featured Dale as one of three nationally known watercolor masters invited to demonstrate painting techniques, so

— Linda Vanek, Vice President

Sept. 12, 2010, Demo by Margaret Dobbins

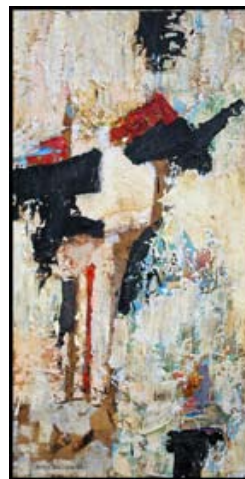


Margaret Dobbins painting at demo the painting on the right

Our first WAS-H general meeting was off to an exciting start. Vice President Linda Vanek introduced our guest artist, Margaret Dobbins, whose knowledge and creative ideas sparked great interaction with her audience. She began her demo with an explanation of the difference between abstract and nonobjective paintings. She shared her use of thumbnail drawings in her sketchbook as a valuable tool for collecting ideas and designs for paintings and for exploring prelimi-

nary color schemes. Some of her painting inspirations included light patterns and shadows and the use of black-and-white photos to show values and simplify shapes.

She coated her watercolor paper with gesso on both the front and the back to keep



the paper flat. Drawing with three pencils simultaneously, she created interesting line qualities, and painted gesso over the lines to make them varied and blurred. Using very little water, she painted the background color first and blended acrylics while the paint was still

wet, reminding us that the underlying color influences the new color being added. In other areas, she let the paint dry completely to avoid mixing the two colors on the paper. In the last stage, she departed from the initial drawing or photograph and allowed the painting to tell her what was needed for a dynamic finish. — Linda Vanek, Vice President

(From the President, continued from page 1)

We now have a date for our annual Clothesline Sale and Art Festival with the Menil. Start saving a few paintings for that. Sign up early and spread the word. The date for that event is April 2, 2011. Yes, that's right, 2011. Time flies when you're having fun and working hard.

If you haven't signed up for our October workshop with Dale Laitinen, there is still time.

If you wonder about an event or time and date, you will find it on the Web site. Thanks to the hard work of Dave and Carrie Mahoney. There have been some changes over the last few weeks. Make sure you visit it at least once a week. Thanks, Dave and Carrie.

It looks great.

—Jerrie Gast

Splash

Members' announcements of juried show acceptances and awards

Robin Avery has been accepted into the Philadelphia Water Color Society's 110th Anniversary International Exhibition of Works on Paper. Her painting is titled *Listen to This*.

Pat Dispenziere's watercolor *FezII* has been juried by Frank Francese into the Watercolor West XLII Annual International Exhibition to be held Oct. 9 – Dec. 19 at the City of Brea Art Gallery, 1 Civic Center Circle, Brea, CA 92821.

Pat's watercolor *Memories* has also been juried by Paul Jackson into the Philadelphia Watercolor Society 110th Anniversary International Exhibition of Works on Paper to be held Sep. 26 - Nov. 14 at the Google Works Center for the Arts in Reading, PA.

The **A.J. Schexnayder**, A.W.S., N.W.S., painting *Jack* was accepted from 1100 entries for the National Watercolor Society's 90th Annual Exhibition, Oct, 31 – Dec. 11 in San Pedro, CA. ☺

Annual Members Exhibit 41st Annual Members Exhibit for Current Members Only

by **Karen Stopnicki**

Annual Members Exhibit Director

The Annual Members Exhibit is just days away. Entries will be accepted at WAS-H on Friday, October 8, from 10 am until 3 pm and on Saturday, October 9, from 10 am until noon. The Prospectus can be found in three places: in the September *Washrag*; on the WAS-H Web site at www.watercolorhouston.org, and at the WAS-H Building. This show is easy to enter because you need to bring only the art, framed according to guidelines, and do not need to have a slide or digital scan made. Awards are in excess of \$3,000 in cash and merchandise. This year, there is a very special award commemorating WAS-H's 35th year as an independent arts organization. It is part of our "Alive for 35" celebration from now through the end of the year.

There are a few rules to follow for your entry: simple metal or wood frames not to exceed 1.5 inch in width, white mats only, under Plexiglas (no glass) and strung with wire for hanging. Since there are more specifics for entry, please read and follow the Prospectus carefully. Our juror is the award-winning artist Dale Laitinen. You will have a chance to meet Dale and see his demo at our monthly meeting on Sunday, October 10, as well as at the reception.

The Opening Reception is at the WAS-H Building on Friday, October 15, from 6 to 8 pm. We have a special guest emcee and awards presenter planned for the event. Come and meet Houston's premier meteorologist Frank Billingsley from KPRC Channel 2. He'll kick off the awards presentation at 7 pm, come rain or shine.

Our Annual Members Exhibit is an exciting event, so please join us at WAS-H to share the excitement. Please address any questions to Karen Stopnicki at 713-927-8992 or to WAS-H at 713-942-9966. ☺

Member Teachers Listing

Sallie Anderson Studio
Galveston
409-763-2265

Portia Bell, BFA
Beginners to Intermediate at
WAS-H, 281-530-8999

Diana Brandt, WAS-H, NW Houston
Beginners to Intermediate, 713-560-2324
watercolor70131@yahoo.com

Barbara Jeffery Clay, AWS
Bellaire area, bclayartist@aol.com
713-592-6303

Pat Conroy, TWS, WFS, WAS-H
Kingwood/Atascocita
281-852-3062

David M. Blackwell, WAS-H
Beginners to Intermediate, 832-656-5171,
davidmblackwell@earthlink.net

Caroline Graham, WAS-H
Museum District
713-664-6589, cgrahamart@msn.com

Joanie Hughes
For Beginners (inside 610), 713-426-6767,
joan-hughes@comcast.net

Nellie Kress, WAS-H, TWS
Katy & Richmond, 281-347-0248
nkkress@msn.com

Gay Paratore, BA, MED, NSA, TWS, WAS-H, Thursdays - Art Alliance at Clear Lake, 409-316-1005

Carol Slobin, WAS-H. Sugar Land
Artists' Alliance and Southwest Houston,
carolslobin@comcast.net, 281-565-1650

Shirley Sterling, NWS, TWS, WFS, WAS-H
Clear Lake, 281-474-4214

Mary Rustay, 713-703-1533 Cell
Watercolor for seniors at WAS-H,
no charge.

A.J. Schexnayder, AWS, NWS, WAS-H
N.W. Houston, 281-444-7524
ajschexnayder@earthlink.net

Marsha Harris Solomon, TWS-PS, NWO, NMWS, AWA, WAS-H
713-266-917 louisgsolomon@peoplepc.com

Mary Wilbanks, NWS, TWS-PS, WAS-H, Workshops and critiques. 281-370-7879 marywilbanks@gmail.com

**SpeedyPrinting**
3433 West Alabama, Suite C, Houston, TX 77027
713.877.8466 Facsimile 713.877.8557
craig@speedyprinting.net

Art on the Go

PAINTING THE TOWN

“Painting the Town” is the name of a weeklong outdoor art festival that I recently had the pleasure of attending. The Southeastern Plein Art Festival, hosted by Elaine Campbell and her great volunteers from the Gadsden Museum of Art, included 17 amateur and 16 professional artists and was in the quaint and small town of Gadsden, Alabama. Each day we went to a new location. We began in downtown Gadsden and then



Jerrie Gast painting the town.

shifted to Noccalula Falls (my favorite). That same evening we painted the mountain's brow from 5 pm to 7 pm. Our lunch was brought to us along with lots of water. We continued by painting Gadsden's historic district, with lunch served in some of the beautiful homes we were painting. The next two days were “Paintin’ on the Farm” and “Paintin’ on the Coosa.” We finished with a silent auction and display of work at the Gadsden Museum of Art. This First Friday event is a monthly event with vendors, antique cars and bands, and the list goes on.

“Paintin’ on the Farm” included painting in my aunt's lovely gardens, a treat I look forward to every year.

Gadsden is a perfect little town for such a festival. A river runs through it, there is a beautiful historic district, the downtown has been very well preserved, and it is set with mountains as a backdrop. Now what more could you want to paint? The week was great.

— Jerrie Gast

Carpe diem

shirl riccetti • sriccetti@comcast.net • 713-460-1895

34th WAS-H International Exhibition

by Norm Wigington and JoEllen Harrison

Co-Directors WAS-H 2011 International Exhibition

Planning for the 34th WAS-H International Exhibition is under way. With two new co-directors, this promises to be an exciting year for the International Exhibition. Building on one of the most important events in the WAS-H calendar, the new directors plan to make every effort to feature this exhibition in Houston's ever-growing art calendar. Noted for its traditionally strong performing arts venues, Houston has achieved a similar renown for its Museum District; we at WAS-H are proud to be an integral part of this art community.

This year the International Exhibition will have the honor of having John Salminen, a two-time WAS-H International Exhibition winner, as this year's juror. Salminen will also be conducting a workshop that will interest a national audience. The entry deadline for the 34th International Exhibition is January 29. Please note: the Prospectus will have revisions from previous years. It will be inserted in an upcoming *Washrag* and will be available online at the WAS-H Web site, www.watercolorhouston.org. For Houston-area residents, copies will be available at WAS-H, 1601 West Alabama, Houston, TX 77006-9966.

Mark your calendar: the 34th WAS-H International Exhibition will open March 19 and run until April 15, 2011. The opening reception honoring the award winners, the juror and all entrants will be held at the WAS-H Building on March 25. John Salminen's demonstration will be featured at the Sunday, March 20, General Meeting, and his workshop will be held March 21-24, 2011. Look for more information in the *Washrag* as the deadline for the 34th WAS-H International Exhibition approaches. ☺

Call for Donated Paintings to Benefit Make-A-Wish

By Linda Vanek

Vice President

We have been invited again this year to donate paintings for the Silent Auction of the Houston CPA Society's 20th Anniversary Golf Classic benefiting the local chapter of Make-A-Wish Foundation, which grants wishes to children with life-threatening diseases.

Last year, WAS-H members donated paintings and the Golf Classic committee would like to expand the offering of watercolors at the silent auction. Deadline for receiving paintings is October 18, 2010.

You will find donor forms at WAS-H, or you may email Paul Vanek, Houston CPA Society Golf Classic Chair, at pvaneck@lycos.com to receive a WAS-H Auction Donor form. You can drop off your donated paintings at two locations in Houston, which are listed on the donor form. ☺



Visitors at August gallery show.

August Gallery Show

By Parrish Hirasaki

Show Director

There were 79 entries in the August Gallery Show competition. It was a very strong show, so winners should be especially proud. Juror James Busby, who is chair of the Houston Baptist University Art Department, was most impressed with the variety in the art, subject matter, media and style. Comments below are his:

Honorable Mentions

William B. Epps - *Crepe Myrtle*:

“Appealing with the shape of the painting working so well with the shape of the trees. I like how the composition is anchored at the bottom.”

Nellie Kress - *Pumpkin Patch*:

“Excellent composition and use of the wide format.”

Dave Mahavier - *Hilltop Spectators*:

“Both the horse’s bodies and legs try to pull you off the page, but the positioning of the three heads keeps you there.”

Janine Kibblewhite - *Relegated to Water Delivery*: “Good warm and cool contrast. Superb drawing. Minimally represented water feels very real.”

David Lloyd - *Green Apples with Cobalt Vase*: “Well-handled and well-drawn traditional still life. Limited pallet with great use of lights and darks.”

Sam Caldwell - *Waiting Out the Storm*: “Good use of transparency. Design with point of interest breaking the long horizontal works well.”



1st - Erik Sprohge - *Bait Stand*: “Beautiful, loose sky. Good values and intensities. Crisp use of the watercolor medium”



2nd Place – Jerrie Gast - *Over the Edge*: “Used both transparent and opaque paint. Diversity of techniques. Excellent composition.”



Erik Sprohge, first place



3rd Place – Duncan Simmons - *Springtime in Texas*: “Wonderful use of variation in color and tone to achieve perspective. Lovely landscape.”



Jerrie Gast, second place



Duncan Simmons, third place



Visitors at August gallery show.

(80s at WAS-H continued from page 1)

Glover's fondness for and belief in WAS-H, she rented us the upstairs apartment over her real estate office. That's when we became known as the Upstairs Gallery and Studio.



Then we moved on to Upstairs Gallery and Studio II, upstairs in the far right section of the building, at 2020 Montrose.

The space was large and open, with many windows for light. There was space for a meeting/classroom, three gallery rooms and an office. We could hang exhibits at will and have ongoing classes or workshops. Best of all, we would be generating money rather than spending it for housing to accommodate these activities. However, we still had to have a larger space in which to hold larger audiences.

There was a most elegant Grand Opening. Fifty-eight paintings were on display. A candlelit refreshment table, champagne and an orchestra playing inspiring music helped the 200 guests enjoy the art and our new home.

Jean and Tom McTaggart hung a sign. Forty-two unbelievable, dedicated volunteers contributed supplies, labor and financial support to ready the space for business.



Robert E Wood Demo at our Sunset Upstairs Gallery.

We started generating money almost immediately. Our office was manned by volunteers, as well as were all of our usual activities.

Major workshops, artists and jurors for the '80s were:

Jurors for National Shows included Ruth Wynn, Carl Molno, Arne Lindmark, Ed Whitney, Murray Wentworth, Al Brouillette, Steve Quiller, Elizabeth Yaros, Fred Samuelson, Laura

Warriner, Ed Reep, Fred Messersmith, Jack Boynton, Jo Brenzo, and Katherine Chang Lu. Jurors for Membership Shows included Mario Cooper,

Michael Frary, Charles Reed, George Shook, Carol Barnes, Bill Armstrong, Maxine Masterfield, Virginia Cobb, Doug Walton, Miles Batt, Chris Schink, Martha Terrill and Arthur Turner.

Presidents for the 80s decade were:

Mary Rustay, Margaret Bock, Ken Austin, Ann Gillaspay, Ted Byrom, Linda Lamb, Liduine Beckman, Judi Coffee, Karen Ruhlan, and Carolyn McElvain.

The Firsts for WAS-H

A WAS-H Traveling Show

Past President Ken Duff organized the Traveling Show, which toured for eight months. He chaired these shows for five years, succeeded by Pat Green. A Touring Show was presented for six years to museums, colleges, art leagues and more.

Outreach

The number of members who serviced this program is legion. Beneficiaries of the program were: Museum of Natural Science, Texas Children's Hospital, Shiners Hospital for Crippled Children, UNICEF, Houston Hospice

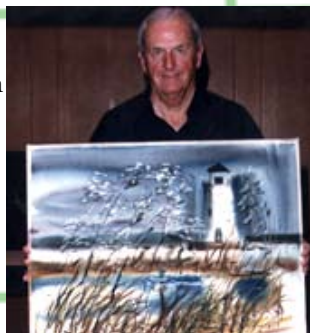
for Terminally Ill children. There were many, many demos and mini workshops for area schools and teachers, Girl Scouts and Brownies. The small matted paintings for the Museum of Natural Science were distributed to assisted-living facilities, as well as to some of the children's hospitals.



Upstairs Gallery and Studio III (downstairs as well as upstairs) followed at 3209 Montrose, where we prospered for four rent-free years.

Alternative spaces

Spaces were made available in which members could exhibit art; for instance: Foley's downtown, Gray Café, the Humana Hospital in Pasadena, TUTS,



Jack Bowen with his buddy Fred Messersmith's painting at Messersmith's workshop.



From the High School for the Performing Arts, Ursala Dai playing the harp. Eldon Sams is urging "play it again."



Mary and Ken Duff, Traveling Show Chairs, at the reception for Traveling Show in Upstairs Gallery and Studio on Sunset.



Dave King, Dennis Fowler, Warren Bock, representing Southwestern Bell Telephone Co; and Myron Blalock. SWB sponsored this traveling show.

The Houston Grand Opera, the Lions Club Art Festival, the Transco Energy Art Purchase Program, the Houston Festival

Growing and Moving

Texas Lawn and Garden Exhibit at George R. Brown Convention Center, Business After Hours exposé of the Arts to the Business Community held at the Hyatt Regency downtown.

WAS-H Signature Status

In '84 the Board of Directors, led by Ted Byrom, adopted the requirements for earning Signature Membership status, qualifying to begin at the 1985 Open (National) Exhibition.

Growing and Moving

The summer of '84 saw WAS-H moving to new quarters at 2020 Montrose. Again we were upstairs; however, this stairway was easier to climb and parking was more available. The site afforded as much space, but in a more open context. Activities continued as usual, with Hazel Youmans and Natalie Rotett at the helm as Gallery Directors.



Mrs. Gus Wortham, who toured our new Upstairs Gallery & Studio II at 2020 Montrose.

Then a year later summer of '85, WAS-H was offered an opportunity we could not refuse. Mr. and Mrs. Ross offered us their building at 3209 Montrose rent free for three years. The space was larger than we had ever had before — a huge classroom and/or workshop area upstairs, plus a room for light boxes and our mat cutter. Also there was a small classroom downstairs, office space, and three rooms suitable for exhibitions. How lucky could we get?

We thrived and grew there for four years. However, we knew that the time would come when we could no longer be there, so we began setting aside money as a beginning "building fund."

The inevitable move came in June of 1986. After enjoying four years of the Rosses' largesse, WAS-H left the Museum District and moved out west to the edge of the Town and Country Shopping Center, we rented a space in the midst

of a retail shopping strip. The space was one large room, which we partitioned off with our portable display boards to make gallery and classroom space. Our year's classes, meetings, demos and exhibits went on as usual, but the membership



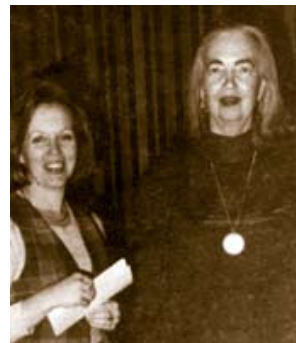
Ann Hartley and Judy Gard answering the call to paint a mural for the Houston Zoo.

increasingly told us to "get a building."

Miscellany of interest in the '80s

- In January 1986 Transco Energy Co. began viewing slides of WAS-H members' work to purchase for offices in the new Transco Tower.

- WAS-H was honored to have Texan Dorothy Hood present a program for the January meeting about her life and her art.



Liduiene Cowan and Dorothy Hood at the 1985 January meeting.

- WAS-H entered a partnership with Houston's Museum of Fine Art and Transco Energy to co-sponsor two lectures on Turner's Watercolors. Others sponsoring the lectures were Exxon, Brookhollow Bank and an anonymous donor. Jack Bowen sponsored the Exhibit. We were in pretty good company, don't you think? Mr. Andrew Wilton of the British Museum of Fine Art installed the Exhibit as a bequest of the BMFA.

- We also had a connection with the MFA through Director Peter Mario, who juried an exhibit, "5X5," for our Gallery in 1984. The winners were Andrew Thompson, Liduiene Beckman, Ann Hartley, Stephanie Nadolski and Eileen

Ruhberg.

- In 1985 the Houston Zoo needed artists to volunteer (unpaid) to design and execute seven painted Texas landscape backgrounds for a new building in the children's sector of the zoo. Judy Gard and Ann Hartley answered the call.

- Ben Taub Hospital was privileged to be the recipient of a requested mural

Painted for them by volunteers Carolyn McElvain and Judy Presswood.

- WAS-H joined the Cultural Arts Council of Houston in the '70s to create more awareness of WAS-H in the arts and corporate communities. As a result, in October 1980, Rita Phenix, our representative at CACH secured a grant of \$1800 toward our fall Membership Exhibit (juried by George Shook). Another benefit WAS-H has enjoyed from CACH was that Jean King joined our ranks to represent us at CACH. Also, WAS-H hired her to apply her seven years of major fund campaigning to help WAS-H, inaugurate an effective fund-raising campaign.

- Britt Hollingsworth, a Business Volunteer for the Arts representative to WAS-H, worked with Bock, Ruhlan and Harris, to help us set up a budget and financial statement in readiness for presentation with our funding applications..

- Linda Lamb became the Chef (fabulous, I must add) for the Lunch Bunch's Munchies and Brushes First Fridays at WAS-H. Luncheon patrons nibbled away while watching a demo. Then the guests painted along with the artist on their paper placemats with paints supplied by

Linda. A Gallery tour was next on the menu.

- Paint-Out lovers went to San Miguel de Allende for a long weekend of great painting and fun. Nobody got sick. There was an overnigher for members to attend the Georgia O'Keeffe exhibit at the Dallas MFA.

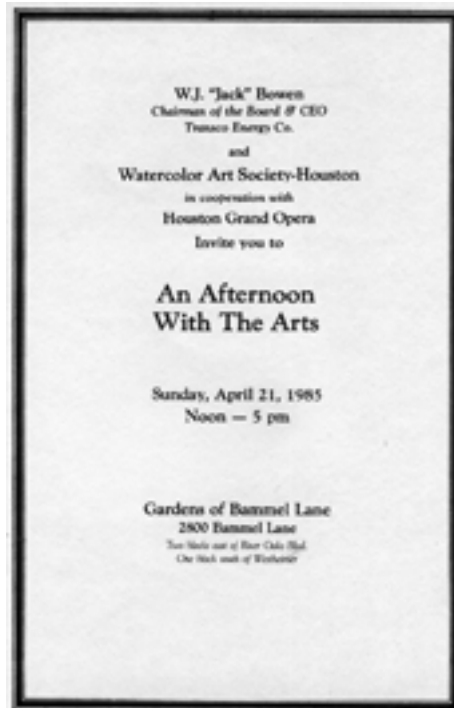
Special Exhibits Of Note

- The 20th Anniversary Exhibit, "Moments Past," at the WAS-H Gallery, September 1989, kicked off the WAS-H fall season. It featured paintings from some of our workshop instructors, they being Ed Whitney, Frank Webb, Robert E. Wood, Zoltan Szabo, Irving Shapiro, Charles Reid and Virginia Cobb. Jack Bowen loaned Craig Lessor's *The Swimmers* and an untitled work by Laurie Weller. There was an overwhelming response to the exhibit. Betty Ewing, Society Columnist at the Houston Chronicle, covered the festivities.

- Another showstopper happened in February 1988. It was an invitational Exhibition of national scope, "A Retrospective-Women Achieving Awards" in Conjunction with the National Conference of the Women's Caucus for Art. A tribute to the stature of WAS-H, exhibitors sent paintings from all over the country. The honor of being included in an exhibit of this scope was enough reward to the exhibitors. There were no awards, monies or ribbons given to entice participation. Our local artists were among the honorees.

- In the 80s we binged on breathtaking experiences. Here comes another one. WAS-H was honored to host the Third Watercolor U.S.A. Honor Society Exhibition and Conference. This is the first time the Honor Society had opened their conference to other artists. We were joined by co-sponsor Transco Energy. The opening of the exhibit, "Watercolor Now II," was at Transco Tower, December 1989. The conference day was held at the Doubletree Post Oak Hotel. Attendees came from all over the United States. It was a select group of award winners and jurors of the past 27 years of Watercolor U.S.A. competitions sponsored by the Springfield, Missouri, Art Museum. Jack Bowen was asked to participate

on the panel. Our own Judy Gard was the Honor Society's representative who organized and produced the Conference. Needless to say, it was a bonanza for WAS-H members to experience.



The Gates are open for the "Afternoon With The Arts."

An Afternoon with the Arts, 1985

At the Gardens of Bammel Lane

- The most unusual, charming fundraiser ever created, "The Piece de Resistance," was conceived of and produced by then, President Linda Lamb with an assist by co-chair Linda

Tibolla. And, of course, it was sponsored by WAS-H benefactor Jack Bowen, Chairman of the Board and CEO of Transco Energy Co. in cooperation with the Houston Grand Opera. In one masterful stroke the cultural community, the corporate community, the media community and the social community became aware of the Watercolor Art Society-Houston.

- Ten paintings by WAS-H members were selected to hang at the Opera during the production of *Die Fliedermaus*.
- The Gardens of Bammel Lane are surrounded on all four sides by charming cottages facing out to the street. Some of



AWTA Chairpersons Linda Tibolla and President Linda Lamb modeling costumes on loan from the Houston Grand Opera.

the cottages housed boutiques. WAS-H used one of cottages as a gallery.

- The High School for the Performing Arts Orchestra provided music.
- The Houston Grand Opera participated by loaning costumes from *Die Fleidermous* for our members to model. The models posed on the verandas of cottages, and were scattered around the Gardens as WAS-H artists painted them.



Carole J Everingham and Martha Terrell, Transco Representatives watching the auction at Afternoon with the Arts.



Jack Bowen, CEO of Transco Energy Co and Hostess Ann Pace Bowen and Transco are Sponsors of as AWTA.



Ava Jean Mears (Houston Grand Opera) and Liz Caderli (Channel 3 TV) at the AWTA luncheon.



The Kick-off Luncheon for the Afternoon With The Arts (AWTA) at the home of Ann Pace. The fare was catered by WAS-H members.

by WAS-H members.

- A host of WAS-H members, spouses and friends served in various capacities helping to make the event a success.
- The sole reason for this all-out event, the AWTA, was to raise the \$15,000 budgeted to finance the WAS-H commitment to host the Western Federation of Watercolor Societies (WFWS). The gross income from "The Afternoon With the Arts" was \$17,000. Expenses totaled 4,158.99. The net income totaled \$12,861.95. Volunteers met for two days

to hand address invitations, helping defray the cost of mailing 8,000 of them (the Opera loaned us their mailing list).

• Sixteen volunteers made WAS-H aprons to add money to the coffers. It was a giant, fabulous experience for everyone.

The Western Federation of Watercolor Societies

Co-Chairs Ann Hartley and Vanita Smith WAS-H is a charter member of the WFWS, which now includes over 3500 artists in nine regional societies: Arizona W C Assoc., Nevada W C S, New Mexico W C S, San Diego W C S, Southern Arizona W C Guild, W C S South Texas, WAS-H, West Texas W C S. Each year the WFWS juried exhibitions and annual meetings are hosted under the sponsorship of one of the regional societies on a rotation basis determined by the year of inclusion.

WFWS draws some of the most prestigious jurors available. In 1976, WAS-H's jurors were Alexander Ross and Lee Weis. Other societies' jurors over the years included Millard Sheets, Rex Brandt, Glenn Bradshaw, Charles Reid, Maxine Masterfield, Jo Taylor and Barbara Neches. Ten years later (1986), in Houston, the jurors were Dorothy Hood and Alexander Ross. Katherine Chang Liu was the juror of Awards. WFWS delegates were wined and dined, and WAS-H's image was enhanced even more.

Now the Nitty-Gritty

As you have seen, WAS-H members were privileged to experience many excellent demos and workshops by guest artists, some years almost one a month. We also experienced the luxury of having a permanent facility in which to enhance our talents by having great teachers from our membership. There have been a crisis or two ... or more, and we wondered if we could maintain this luxury. Obviously, as we celebrate 35 years of doing business, we can rejoice in the fact that we



"We did it!" says Linda Tibolla elated over the outcome of the Afternoon With The Arts.

did make it. Thanks go to the dedicated people who took on the presidencies and other major leadership roles; to those who always came to the fore to help anytime, any way; and to those who participated in the workshops and exhibits. So that is a thank you to our entire membership. As a volunteer-run organization,



United Nations Association Poster Exhibition Competition winner of Top Honor, Mona Rashaad, fourth grader at Longfellow Fine Arts Academy.

Extracurricular Exhibition Opportunities

The Westheimer Festival was an annual event for years. WAS-H participated as an organization in the select area as an outreach activity. Since space was limited, members of WAS-H vied for a space in the Alley Gallery, which was held in the parking area/alleyway at 3209 Montrose. A selection process was established. Portable display boards were set up, while other accoutrements were up to the participants. It was a fun time, a good time for sales. It was a regular on our calendar each year.

In an effort to "reach out and break up," a plan was implemented in which the Houston area was sectioned off. Members in their areas met together to bond, critique and entice others to become members of WAS-H. These area groups functioned for a number of years. They may still be active.

WAS-H tried at least four times while we were functioning at 3209 to hire a receptionist. They usually lasted a few weeks; one or two of them were not reliable or efficient. Our quest over the years finally brought us Martin Butler. I, for one, appreciate what a gem he has proven to be. ☺

is there another as successful as we? or which has a Jack Bowen and Dr. Faber McMullen as consistent donors?

Paint-In

Margaret Bock and Betty Frost
Paint-In Coordinators

**Carol Slobin – Saturday October 25,
9:30 am - 3:30 pm**



Ballerina In Repose by **Carol Slobin**

A native Texan, Carol Slobin was born in Houston, attended the University of Texas, and graduated from the University of Houston with a Bachelor of Fine Arts degree. Always fascinated by the luminous quality of watercolor, she began her education with Marge Brichler, who taught her the techniques of the medium. She later took life drawing from Jose Perez and portrait painting from Lajos Markos. Attending numerous watercolor workshops over the years shaped her work, and inspired her to grow as an artist as she explored painting different subjects. Carol is an Elite Signature member of WAS-H. She is the recipient of numerous awards, and her paintings are included in many private and corporate collections throughout the United States. Her painting, *Wine and Roses*, was selected to be in the book, *How did you paint that? 100 ways to paint STILL LIFE & FLORALS*, published by International Artist. Carol teaches drawing and watercolor in the Sugar Land area where she now lives. You can visit her Web site at www.carolslobin-fineart.com.

Description of Paint-In with Carol

Slobin

Brush up your skills in figure drawing and painting. Carol will demonstrate how to draw the figure using simple landmarks to achieve good proportions. Emphasis will be on simplifying and on using geometric shapes to begin.

Students will be encouraged to see the proper values and will be given tips on painting with watercolor to describe the figure. The class will have the model start with short poses and continue with longer ones as the day progresses. Carol will discuss simple ways to approach describing fabrics, worn by the model, and the use of background to complement one's painting.

Please bring drawing paper, watercolor paper (there will be numerous poses), your pencils, eraser, water-soluble graphite pencils, watercolors, palette, brushes, support board, paper towels, and your sense of humor. Call for more details, 281-565-1650. There will be a model fee.

2010-2011 Paint-In Schedule

Nov. 27 To be announced
Dec. No Paint-In
Jan. 22 Joanie Hughes
Feb. 26 Nellie Kress
March 26 . Cheryl Wooten
April 23 ... Linda Jarnigan
May 28 ... Sarah Kitagawa



A donation to Seeds of Watercolor has been made in celebration of WAS-H's 35th Anniversary by Steve Brenner.

Also, WAS-H received a Seeds of Watercolor donation from Richard Carrell in memory of Matthew R. Simmons, an avid supporter of our organization who passed away unexpectedly in August. Mr. and Mrs. Simmons' Otter Foundation played a major role in funding our new building and their support of the art community in Houston is far reaching.

Volunteer of the Month



Volunteer of the Month Helen Peters

The gallery directors could not do without Helen Peter's help with take-in every month. She makes the labels that go with the paintings, and she places them by the paintings. The labeling of all the paintings take most of the day. Thank you, Helen. We could not do it without you.

Helen is a very active member of WAS-H. She participates in the Take-in, the Paint-Outs and Paint-Ins, the Clothesline Sale and the Wednesday model sessions. She is looking forward to the Sam Caldwell Paint-In that is coming up.

It is volunteers like Helen who make WAS-H an exciting place that it is. Thank you, Helen Peters. ☺

Demo & Workshop with Artist Mary Wilbanks

Demo at November 14 General Meeting

Workshop: November 19, 20, and 21, Get ready for an exciting demo by Mary Wilbanks at our General Meeting on November 14, 2010. Mary, who has won over 40 awards in national shows, is a member of NWS and the Watercolor Honor Society, and is an Elite Signature Member of WAS-H. She has taught at the Phoenix Art Museum and Colorado Springs Fine Art Center, and is currently a workshop teacher at the Watercolor Art Society-Houston. Her demo will take us through the entire process of experimental collage on canvas and paper, using opaque and transparent painted papers, and glazing with acrylic paint.

Her workshop, "Expressive Collage: Communication in a Clear Way", will be on November 19, 20 and 21, 2010. Join us for some dynamic and creative ideas to enhance your own paintings. ☺



November Gallery Show

Questions? Susenne Telage, 281-395-9886,
susenne@telage.com

Theme: Experimental.

Take-In: Saturday, November 6, 10:00 am – 1:00 pm
(Entries may always be brought in before take-in day.)

Reception: Friday, November 12, 6:00 pm – 8:00 pm

Pick up paintings: December 3 or 4, 10:00 am – 3:00 pm

Juror: Linda Darke Swaynos is a past-president of WAS-H. She has a BA in Fine Arts and has taught art in the US and Italy. Her colorful acrylics and watercolors reflect her travel experiences and are in collections throughout the world. See Linda's work on www.askart.com.

Eligibility and Requirements

- Artist must be a current WAS-H member.
- Up to three entries per artist.
- Fee of \$10 per entry.
- Artwork Regulations:
 - Original composition.
 - Completed in the last 24 months.
 - Not painted under supervision or in a class.
 - At least 80% watermedia.
 - Surfaces: Any surface except breakable glass.
 - Has not won a WAS-H award.
- Framing Regulations:
 - No restrictions on frame style or width.
 - Any color of mats and liners.
 - If wider than 12", strung with wire for hanging.
- Plexiglas, if glass is needed.
 - Paintings not to exceed 48" in height or width, frame included.

Awards

- Cash awards for first \$100, second \$75, third \$50.
- Honorable Mentions awarded a ribbon – no cash.
- Only one award per artist.
- Winners are notified by phone.

Sales

- WAS-H accepts a 20% donation for sale of artwork.
- All artwork must remain in gallery for duration of the show.
- Artwork price is to include sales tax.
- A 5% fee is taken out of credit card sales.
- All sales include frames.

Liability

WAS-H will not be liable for damage before, during or after the exhibit. The Director for this show has the right to reject any painting that he or she deems does not adhere to these guidelines or is inappropriate for the venue.

Abbreviations

Medium: WC – watercolor, A – acrylic, G – gouache
Surface: P – paper, YP – Yupo, CB – Claybord, C-Canvas

Name _____

Email _____

Tel. (H) _____ (C) _____

Title #1 _____

Price _____ Medium _____ Surface _____

Title #2 _____

Price _____ Medium _____ Surface _____

Title #3 _____

Price _____ Medium _____ Surface _____

Submission by the artist constitutes agreement on the part of the artist to the stated regulations.

Signature _____ Date _____

Attach this label or a facsimile to the back of each painting.

Name _____

Tel. _____ Price _____

Title _____

Framed Size _____ x _____ Medium _____ Surface _____

Name _____

Tel. _____ Price _____

Title _____

Framed Size _____ x _____ Medium _____ Surface _____

Name _____

Tel. _____ Price _____

Title _____

Framed Size _____ x _____ Medium _____ Surface _____



A monthly publication of the

Watercolor Art Society - Houston

1601 W. Alabama at Mandell, Houston, TX 77006

713•942•9966 • www.watercolorhouston.org

NON PROFIT ORGANIZATION
U. S. POSTAGE
PAID
HOUSTON, TEXAS
PERMIT NO. 2169



VerdantMedia

Fine Art Giclée Printing

- Highest quality fine art printer
- Archival inks, paper & canvas
- Ultra high-res Scitex® scanning
- No minimum orders
- Matting & framing services
- Canvas stretching & sealing
- Warm, personal attention
- A collaborative working environment

**Call Sid today at (713) 688-9205
to schedule your appointment!**

5401 Mitchelldale, Suite A-2
Houston, Texas 77092
<http://www.verdantmedia.com>

**We Offer a 20% DISCOUNT
To All WAS-H Members!**



**SUPPLY
ON MAIN**
2711 Main St.
Houston, TX
77002

If you need
more directions
Please call

ART SUPPLY
(713) 652-5028



email vikki: artsupply@swbell.net