

## From the President

By Jerrie Gast, *President*

Since I joined WAS-H in 2006, the receptions have been a part of my life. Helping Past Gallery Director Bridgett Vallery by being in the kitchen was well worth the long drive, and getting to meet everyone as I served drinks or food was fun. Suzanne Leatherwood ran a smooth kitchen and kept us all in line. And now we have a wonderful new group of hard workers volunteering in our kitchen, and we are delighted to see the tradition continue.

The Birthday Party was exactly as a reception should be — fun filled, lots of laughter and surrounded by lovely paintings a celebration of art, friendship, and our WAS-H community, with all that goes into making this a great learning facility. Thank you. PR Director Muriel Christensen, for the large crowd. Thanks to Susenne Telage and Jan Shrader for the lovely display of paintings. Thanks to all the members in the kitchen working so diligently. Here comes another song: “Oh, what a night.” It was just that, a reception to remember.

If you haven't noticed, please look to your right as you walk up the stairs of our building. This is our guest artist wall. When we invite a guest artist, he or she will often donate a painting. We have it framed, and Steve Brenner hangs it. (Maybe we will have another soon!) When you are available and see new people visit the building, please point out these interesting things to them: the library, classrooms, kitchen and gallery. Invite them to look, enjoy and participate. We lead a very artful life in and around WAS-H and are very proud of

*(continued on page 3)*



*What We Worship* by Carla Gauthier

## 41st Annual Members Exhibit

By Karen Stopnicki, *Annual Members Exhibit Director*



*Eretor Set #2* by Judi Coffey

Wow, we really had a spectacular show! Every year we all anticipate the two major shows, but I have always had a particular fondness for the Annual Members Exhibit. It is great to see the members come in with their paintings and for those working the take-in to get a sneak peak on how fabulous they all are. I wonder how the juror will be

able to select the show and then pick the winners. Sure enough, Dale Laitinen did a wonderful job as he thoughtfully looked at each painting submitted. You can see the first, second and third place winners here. The *Washrag* is jam-packed this month, so look for the

*(continued on page 6)*

### Calendar

**Board Meeting** – Nov. 1, 10:00 am

**Monthly Show Take-In** – Nov. 6, 10 am – 12 noon

**Gallery Reception** – Nov. 12, 6-8 pm

**General Meeting** - Nov. 14, 1:30 pm,

**Demo** – Mary Wilbanks

**Paint-Out** – Nov. 20, 8:30 am-3:30 pm

**Paint-In** – Nov. 27, 9:30 am-3:30 pm

**Wed. Figure Labs** – 12:30-3:30 pm

This page is blank.

WAS-H office  
1601 West Alabama at Mandell  
Open Tuesday-Saturday  
10:00 am to 3:00 pm.  
For information please contact:  
Martin Butler, Administrative Assistant  
713-942-9966  
[www.watercolorhouston.org](http://www.watercolorhouston.org)  
email: [was-h@sbcglobal.net](mailto:was-h@sbcglobal.net)

#### WASHRAG INFORMATION

DEADLINE for copy, photographs and advertising for the *Washrag* is 4:00 pm, the 5th of each month except June and December. Material not received by the deadline will appear in the next month's *Washrag*. Please submit items via email or typed.

#### ADVERTISING RATES

Effective September 2001

Full page (7.5" by 10")	\$75
Half page (7.5" by 4.7")	\$50
Quarter page (3.7" by 4.7")	\$25
One column (30 words)	\$15

Area Teachers Listing \$25 (per year)

Payments for *Washrag* ads must be received no later than the 10th. Please mail check to WAS-H.

Column ads should be typed. All other ads must be print-ready. Photos must be 300 dpi.

Submit material to:  
WAS-H 713-942-9966

1601 West Alabama, Houston, TX 77006,  
or via email to our newsletter editor, Rosalie Ramsden, [ramsdendesign@earthlink.net](mailto:ramsdendesign@earthlink.net). Please put WAS-H in subject line of your email.

### Wednesday Model Session

The Wednesday Model Lab group will continue to meet every Wednesday, 12:30-3:30 (unless there is a workshop scheduled) at WAS-H. Please email me [crensink.art@att.net](mailto:crensink.art@att.net), and I will let



Recent model for Wednesday model lab group.

you know the model each week before the session. So y'all come with your drawing and painting gear and do your own thing for three quiet hours of model time. It is a wonderful opportunity. Carol Rensink, 713-524-5146.



## General Meeting, November 14 Social 1:30, Meeting 2:00 pm Demo - Mary Wilbanks

### Demo and Workshop with Artist Mary Wilbanks



Signs and Symbols

**Demo at November 14 General Meeting — Workshop: November 19, 20, and 21.** Get ready for an exciting demo by Mary Wilbanks at our General Meeting on November 14, 2010. Mary, who has won over 40 awards in national shows, is a member of NWS and the Watercolor Honor Society, and is an Elite Signature Member of WAS-H. She has taught at the Phoenix Art Museum and Colorado Springs Fine Art Center, and is currently a workshop teacher at the Watercolor Art Society-Houston. Her demo will take us through the entire process of experimental collage on canvas and paper, using opaque and transparent painted papers, and glazing with acrylic paint. Her workshop, "Expressive Collage: Communication in a Clear Way", will be

on November 19, 20 and 21, 2010. Join us for some dynamic and creative ideas to enhance your own paintings. — Linda Vanek, Vice President

Editors's note: Mary Wilbanks's painting was placed in Margaret Dobbs's article by mistake. Margaret Dobbs's finished painting demo is included in this issue. I apologize.

### General Meeting: Demonstration by Dale Laitinen

Following a brief introduction by Vice President Linda Vanek, the Watercolor Art Society-Houston was captivated by the watercolor demonstration of Dale Laitinen. According to Dale, "A painting should not only look right but feel right. Painting is more for the poet than the copyist. Inspired by our subject, we can go beyond the description and into our interpretation as artists. Line is not only an important way to begin a work, but a unifying force throughout the process. An artist develops his or her visual language first through line, and this is what makes each individual unique."

(continued on page 3)



(From the President, continued from page 1)

our building and members.

You are supporting WAS-H with your entry fee when you enter a painting into a show at WAS-H, but WAS-H also needs everyone to do his or her active part as a volunteer. Are you one of those people who help or just take? As a participant in our shows, it is also your responsibility to provide a snack of some kind and volunteer during our receptions. It is noticeable when members don't do their part and give back in some way. It should not be up to the Take-In crew to remind you of this, but when members are needed and you are asked, please respond in a positive and contributing way. ☺

(Laitinen demo continued from page 2)



Dale also shared his personal sketchbooks, which he uses not only for ideas but also as a tool to build visual memory and accuracy. Starting with 300 lb. watercolor paper stapled to plywood, he began with a wet into wet underpainting, establishing the color of the lightest value. Blocking in shapes using contour and gestural line, he treated the landscape as a unit and worked through the composition. Twisting the brush when applying color created wonderful edges in the cloud shapes. He continued to work from lightest to darkest, general to specific, and used "calligraphy" in his brushwork, skillfully switching from left hand-painting to right-hand painting.

To let the personality of the artist come through, Dale omitted a little of the representational quality, making the "impression" and leaving the viewer to fill in the details. His masterful balance of abstract and representational elements dynamically concluded his painting, drawing each of us into our own interpretive experience of his landscape language.

### WAS-H Recipient of Bowen Library

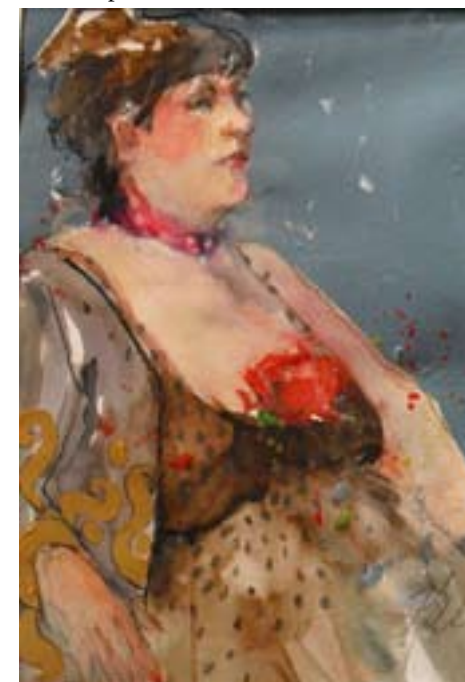
Jack and Annis Bowen have given their library of art books to WAS-H. The books, in excess of 250, contain works in various media as well as instructional books. The Board has decided to keep the library intact as opposed to merging into the WAS-H existing art library. Various scenarios are being considered for storage and making the library available to all WAS-H members. The library is just one of the many generous gifts given to WAS-H by Jack and Annis, for which we give them another big thank you.

### Beginning in December, Take-In for the monthly gallery shows will end at 12:00 noon rather than 1:00 pm.

Many artists are bringing work early so Take-In is much less hectic on the final day. Early entries go in the kitchen closet and are logged on the clipboard hanging on the closet wall. The registration form and fee should go in an envelope fastened to the back of one of the paintings. Martin Butler is there to assist when the building is open, Tuesday-Saturday from 10:00 to 3:00. ☺

(41st Annual Members continued from page 1)

December issue to see a comprehensive listing of all winners plus photos from the reception. ☺



Patricia by Liz Hill

### Member Teachers Listing

#### Sallie Anderson Studio

Galveston  
409-763-2265

#### Portia Bell, BFA

Beginners to Intermediate at WAS-H, 281-530-8999

#### Barbara Jeffery Clay, AWS

Bellaire area, [bclayartist@aol.com](mailto:bclayartist@aol.com)  
713-592-6303

#### Pat Conroy, TWS, WFS, WAS-H

Kingwood/Atascocita  
281-852-3062

#### Caroline Graham, WAS-H

Museum District  
713-664-6589, [cgrahamart@msn.com](mailto:cgrahamart@msn.com)

#### Joanie Hughes

For Beginners (inside 610), 713-426-6767,  
[joan-hughes@comcast.net](mailto:joan-hughes@comcast.net)

#### Nellie Kress, WAS-H, TWS

Katy & Richmond, 281-347-0248  
[nkkress@msn.com](mailto:nkkress@msn.com)

#### Gay Paratore, BA, MED, NSA, TWS, WAS-H, Thursdays - Art Alliance at Clear Lake, 409-316-1005

#### Carol Slobin, WAS-H, Sugar Land

Artists' Alliance and Southwest Houston,  
[carolslobin@comcast.net](mailto:carolslobin@comcast.net), 281-565-1650

#### Shirley Sterling, NWS, TWS, WFS, WAS-H

Clear Lake, 281-474-4214

#### Mary Rustay, 713-703-1533 Cell

Watercolor for seniors at WAS-H,  
no charge.

#### A.J. Schexnayder, AWS, NWS, WAS-H

N.W. Houston, 281-444-7524  
[ajschexnayder@earthlink.net](mailto:ajschexnayder@earthlink.net)

#### Marsha Harris Solomon, TWS-PS, NWO, NMWS, AWA, WAS-H

713-266-917 [louisgsolemon@peoplepc.com](mailto:louisgsolemon@peoplepc.com)

#### Mary Wilbanks, NWS, TWS-PS, WAS-H, Workshops and critiques. 281-

370-7879 [marywilbanks@gmail.com](mailto:marywilbanks@gmail.com)

**SpeedyPrinting**  
3433 West Alabama, Suite C, Houston, TX 77027  
713.877.8466 Facsimile 713.877.8557  
[craig@speedyprinting.net](mailto:craig@speedyprinting.net)

# Art on the Go

PETIT BONHEURS

Nice Moments ...

... and this is the way Ann Sanders describes her two weeks in Provence. The stone cottage her daughter rented near the small village of Banon was surrounded by beautiful gardens, with a field of lavender across the road. Since Roman times, this village has been known for its goat cheese.

Their stone cottage also had its own fruit-loaded cherry tree, ample butterflies and pine trees. Adding inspiration to this idyllic village were a bookstore and a weekly outdoor market with fruits, vegetables, cheese and even clothing.

Ann remarks, "I felt like I was living in a storybook," and "the mornings and evenings were perfect for eating outdoors."

For more excursions, Ann and her



Ann Sanders in Provence

daughter drove to Villefranche on Cap Ferrat, Eze, Rouissillon (with the ochre cliffs) and Cassis.

Between her 759 photos, she painted. Ann's travel art supplies were: thin lap-board, watercolor paper 7 1/2 x 11 inches, cake paint box, round brush, slant brush, Sharpies, watercolor pencils, water bottle, paper towels and a small pan. On a very practical note, Ann brought a hat and a cushion.

These "petit moments" continue, for she mentions that, "I came home inspired to paint, grow herbs and work

(continued on column 3)

## Splash

Members' announcements  
of juried show acceptances and awards

**Acree Carlisle's** painting "Springtime Yellow Lily" was awarded Finalist in International Artist Magazine's Art Prize Challenge No. 59, Still Life & Florals competition, as published in Issue 75, October/November 2010.

Congratulations to **Barbara Feiner** for winning both Best of Show in Watercolor for her painting Belltone and the McGivney Award for watercolor with Banana Bloom Afternoon.

First Prize went to **Portia Bell** for Ancient Prayers and Second Prize to **Jackie Liddell** for Night School at the Galveston Art League.

**Mike Mazer** received First Place in Watercolor, Cape Cod Art Association, All New England Exhibition, Barnstable, MA; Howard Curtis Memorial Award for Excellence in Marine Painting, North Shore Arts Association, Gloucester, MA; Special Recognition, Upstream People Gallery, On-line, All Media International, NE; Second Place Award of Excellence, Taos National Exhibition of American Watercolor XIV Invitational; First Place, Stoughton Art Association's Member Exhibition, Stoughton, MA; and an Honorable Mention, Cape Cod Art Association's National Exhibition, Barnstable, MA.

One of his marine paintings is published in the new book *The Artistic Touch 4*, featuring 120 of the top artists in America.

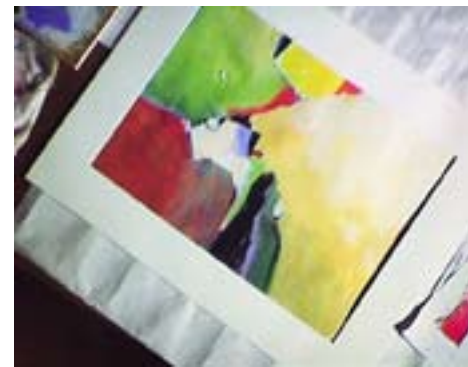
**Hazel Stone**, TNSW, PWCS, ISEA, CWAZ, AWA, PWS, NWWWS, AzAq, KWS, PPWS, TWS, has had paintings juried into these exhibitions: 2010 Kansas Watercolor Society National Exhibition, The Wichita Center for the Arts, Wichita, KS; Mississippi Watercolor Society Grand National Watercolor Exhibition, Mississippi Museum of Art, Jackson, MS; Pennsylvania Watercolor Society's 31st Juried Exhibition; Crary Art School and Galleries, Mechanicsburg, PA; Arizona Watercolor Association National Watermedia Exhibition

(continued on column 3)

(Art on the Go, continued from column 1) in my garden."

PS: Ann's daughter, Julie Long, found this storybook cottage on the Internet, doing hours of research. She would view places and also read the reviews of each place. Researching a place for art takes time, and enjoyment of looking at and for details.

Carpe diem . shirl riccetti •  
sriccetti@comcast.net • 713-460-1895



Margaret Dobbs finished painting from her October demo at our general meeting.

(Splash, continued from column 2)

2010, Arizona State University West Library, Watercolor U.S.A., Springfield Art Museum, Springfield, MO, She had paintings exhibited in the following Signature Member Invitation Exhibitions, Pikes Peak Watercolor Society Signature Members' Show, TRI Lakes Monument, CO; Taos National Exhibition of American Watercolor XIV Invitational for Signature Members, Millicent Rogers Museum, Taos, NM. ☺



### Sam Caldwell Paint-In, Sept. 10

Sam greeted the class with a smile and much enthusiasm. He began by painting a fabulous rooster of many colors, using a very large, flat brush. The class then painted their own versions of the bird. Next came a mountain scene of great color. It was a vertical painting. Sam stressed the importance of diagonals in painting.

— Betty Frost



**1st Place – Ruby Allen, Misty Morn.** "This painting has beautiful color execution. I like the softness, depth and the color composition. A very nice painting with good balance and diagonal flow."



**2nd Place – Susenne Telage, Her Treasure.** "A beautifully executed work. It has a clean, nice composition with good control of color and guiding lines leading the eye to the focal point."



**3rd Place - Pat Conroy, Saturday Shoppers.** "This painting has very good composition. Depth and reflections are skillfully executed. It has a good use of the blue-orange color scheme."



## September Member Exhibition

By Susenne Telage  
Gallery Co-Director

### Awards and Juror's Comments

#### Honorable Mentions

**Reva Power, Oregon Point.** "A good composition and color scheme with great texture."

**Helen Stanley, Purple Bounty.** "Bright, happy colors are executed very well. Interesting treatment of the roots. Good color harmony".

**Jan Shrader, Winter Sun.** "This painting creates a very nice mood. It is well executed".

**Jan McNeill, Dockside.** "This work incorporates interesting geometric shapes and good use of complimentary colors."

**Erik Sprohge, Coastal Spring.** "This has excellent composition and color. It is skillfully painted."

**Nancy Fleagle, Time To Forget.** "This painting has a nice abstract quality. The color and composition create the mood."



Visitors at WAS-H's 35th Birthday Party.

# The '90s at WAS-H

By Margaret Bock & A.J. Schexnayder

The period of history for the Houston Watercolor Society that began in the 1990s was one of the most important.

The Watercolor Society had no permanent home and was relying on the generosity of various landlords to grant space we could afford until that space was needed for their business.

Our meeting place was constantly moving to new locations. We lucked out when Katherine and James Ross offered us the location at 3209 Montrose. We thrived there for four years, rent-free. Of course, free isn't really free, as we were responsible for general maintenance and utilities.



*D. Maury Wentworth demo at the General Meeting, October 1990 in the classroom at 3209 Montrose.*

While there, we mounted several exciting large exhibitions and held workshops and general meetings all in one facility. How novel!

WAS-H held several open competition-exhibitions as a way of reaching out to the community. **Texas Through the Eyes of Texans** was a very exciting one. WAS-H partnered with the Houston-Galveston/Stravanger Sister City Society. WAS-H's Watercolor Exhibit



*Left to right: Helga Shepard, Eleanor Tinsley and Eric Leikvang, Consul general. and Stravanger's Art Glass Norway were displayed in the WAS-H Gallery. Jurors was Marti Mayo and Judge was John P. "Jack" Cowan. Annell Livingston win-*



*Jack Cowan, judge.*

ner of WAS-H's Exhibit got to travel to Norway to be present at the Stravanger's Exhibit.

Another community event was the **Photo/Mixed Media Exhibit** during the International Foto Fest month long convention in Houston. Jurors were Martha and Jack Meier of Meier Gallery. The Judge was Harry Burrus, whose Photo Exhibit Hung with ours at WAS-H.

**This Land** invited open competition from the community.

**Private Collection Treasures** featured works of "artists' artists" collected by WAS-H members and friends, a very popular exhibit.

A greeting card competition was held among members. The winning painting was reproduced as a greeting card for a fund-raiser.

**People's Choice** award was just that. At a chosen monthly gallery exhibit, viewers chose their favorite painting. The winning painting had a place of honor in the next exhibit.

The most popular show for our members was the annual Alley Gallery Show, a part of the annual Westheimer Festival.

Our "shop" was set up in the parking area of the Gallery and members could sell their work as part of the Festival. We were allowed to continue this even after we moved to Town and Country.

Besides our annual Membership and National Exhibits, we hosted the Watercolor U.S.A. Honor Society Exhibit from Springfield, MO. We brought the AWS Traveling Exhibit to Houston for the second time.

Alas, our good fortune came to an end, as we knew it ultimately would. The Rosses needed us to return their building to them. The search for a new environment was on. The best offer we had was for \$1200 a month for rent. We settled for a storefront in a strip shopping center just south of Town & Country Mall. The space was one large room, which we partitioned off with our display boards to create a classroom/meeting space, and a small gallery space.



*Juror Dr. Rice with HAEA President Catherine Blount and WAS-H President Marsha Harris.*

Our activities continued without pause. Sales to new homebuyers was brisk. In the meantime we bargained for free rent and were charged only for maintenance fees, insurance and utilities. Not much of a bargain, as this totaled \$1400 a month for us to operate.

The Houston Art Education Association took pity on us during our relocation, and offered to share the Houston Downtown Library for our Student Teacher Exhibit. The exhibit was called Joint Palette.

In 1991, while we were at the Town & Country location, a Selection Committee headed by Herb Cowell, along with Margaret Bock, Mary Rustay, A.J. Schexnayder, Doris Childress and Linda Tibolla, searched the City of



*Members of the Selection Committee over-seeing the inspection of the WAS-H building site, August 29, 1991.*

Houston for more satisfactory locations. Harold Phenix was asked to present to the membership a schematic location of member residences' and a projected central point from all members' area of residence. Harold determined the geographical center of our membership was "in the middle of a Shell Gasoline Station on the west side of the 610 Loop between Westheimer and San Felipe." Estimated land cost \$200,000/5,000 sq ft. and the building was estimate \$250,000, for a total of \$450,000.

A Steering Committee and Capital Fund Drive was put in place. A list of participants and contributors is so long it would be impossible to include them all. W. J. Bowen, Richard Kinder, Charles Foster, Jack Pardee, Mathew Simmons and Dr Faber McMullen, all prominent Houston businessmen, were a few of many involved in the dream of a permanent home for the Society.

The Committee took many months searching property throughout the area. After considering many locations, they decided to focus on the location at 1601



*Our home at 1601 West Alabama at the time of purchase.*

W. Alabama, the estate of Dr. Wilfred Bonin and his wife, both deceased. The building had been a residence and

physician's office. Thirteen contract actions between the two parties took place before terms of the contract were finalized. The contract: a sale price of \$170,000 was agreed upon on August 1, 1991, and truly took a team effort.

Many hours were spent, and many volunteers worked scraping, sanding and



*The Kreitzer family working on the walls inside the new WAS-H building.*



*The volunteer renovations crew working at 1601 W. Alabama.*



*Our painting crew who did an excellent job on the upstairs work: left to right, M.F. Rutherford, George Bloxsom, Ruth Hill Radcliff and Efton Mitchell.*



*The Demolition Squad in action. Left to right, Gil Lamb, Warren Bock, Alen Lacy and Dave Tibolla.*

preparing the building for occupancy. **Jurors we've had for national and member exhibits.**

#### **Jurors: National Exhibits**

Frank Webb, Gerald Brommer & Leo Smith, Stephen Quiller, Judi Betts, Linda Doll, Margaret Martin, Dan Burt, Maurice Schubin, and Michael Schlicting

#### **Jurors: Member Exhibits**

Murray Wentwor, William Herring, Pat Deadman, Doug Walton, Carl Dalio, Jean Grastorf, Mary Todd Beam, Gerald Brommer and Ann Pembraer

**Presidents in the '90s include:** Carolyn McElvain, Marsha Harris Soloman A.J. Schexnayder, Margo Vance, George Bloxsom, Gerry Finch, Efton Mitchell, Vivian Pollock, Jo Ann Miller, Carol LeCrone-Hale and Lew Glist

#### **Major Workshops**

Carolyn Lord, Linda Doll, Leo Smith, Gerald Brommer, Wm. H. Herring, Frank Webb, Shirley Romer, Al Brouillette, Stephen Quiller, Fred Messersmith, Carl Dalio, Virginia Cobb, Betty Braig, Milford Zornes, Ann Pember, Jean Grastorf, Mary Todd Beam, Michael Schlicting, Dan Burt, Judi Betts, Pat Deadman, William Herring, Murray Wentworth and Ed Reep.

#### **Exhibit Venues**

First City Bank, Cullen Center, Transco Energy Co., Texaco Heritage Plaza, Nation's Bank and Lyric Center

#### **Outreach**

Channel 8 Auction featuring four tables of WAS-H-donated paintings. The tables were featured on TV occasionally. The Museum of Natural Science Christmas tree project with the miniature matted tree ornaments going to Shriners Hospital for Crippled Children; Galveston Home and Garden Show ben-



*Don LitzEAU paints portraits for Cash Construction's "A Texas Salute to France", benefiting The American Cancer Society.*



Joanie Hughes at St Jerome's Elementary.



Lou Glist painting a mural depicting images of children's activities which are served by the Texas Children's Hospital around the world.



From the left, Diane McCarten and Sheryl Downing working at one of four murals they designed and painted for the Sundown Elementary School in the Katy ISD.



Judges at the Instituto Cultural Mexicano: from the left: A. J. Schexnayder, Gerry Finch, Lou Glist, and Rebecca Castilio from Ripley House.

efiting The Animal Shelter and Adoption Center; Life Enrichment Center of Houston; American Cancer Center; Texas Children's Hospital Cancer Center



Margot Vance, Chairman of "The Weather Show," with Juror T V Weatherman Doug Johnson holding the 1st place winner.

ngoing; Make a Mark; Ripley House; Girl Scouts and Brownie troops; The Art in Medicine Christmas Posters (project covered by Channel 13); Harris County Psychiatric Center; Spring Branch Health Center; Houston Junior Forum Seniors led by Mary Rustay; 20 schools,

many visited multiple times; WAS-H Children's workshop six weeks; Houston Arboretum; daycares; Nursing Homes; retirement homes; community centers; art leagues; and the Post Oak YMCA 6th



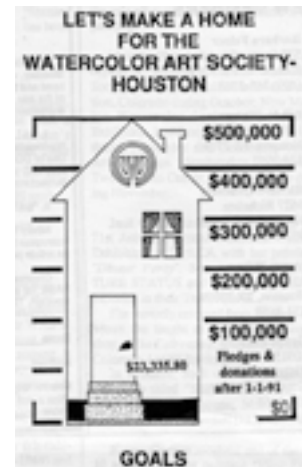
George Blossom, with Fund Drive Chairman Linda Tibolla, kicking off the Building Fund Drive with his \$100 donation..

and 7th graders, just to mention a few. The Traveling Exhibits reaches art-deprived areas across the state. WAS-H volunteers have painted Prints of Charles Dickens for a number of years to benefit the Museum of Printing History Fund Drive.

Faithful volunteers, your contributions to WAS-H and to those you have served in so many ways are so important and appreciated. Your numbers are legion, and I don't want to offend anyone by not being able to mention all of you by name, so I guess I will offend all of you with my apology to all.



Jack Bowen, Honorary Chairman of the Capital Fund Drive, lauding the participants in the Fund Drive for being able to retire the mortgage in only four months. After the congratulations he literally tore up the mortgage. President Margo Vance, left, and Linda Tibolla, Chairman of the Building Fund Drive, right, looking on.



Young of the Menil Collection and Linda Tibolla, among others.

### Creativity in Action

A Building Fund was started before we



YEEE HAWWWW we're off to the Piney Woods Convention Center for a WAS-H weekender Paint-Out. It's time for a break.



even left 3209 Montrose. Don Lietzau's slogan won the contest for naming the fund drive, which was: "Catch the Spirit." The goal was \$500,000. Donations started coming in unsolicited from members.

Many projects surfaced:

- The Greeting Card Contest fund-raiser.
- Hand-painted greeting cards for sale at the Gallery.
- A C-note sale. Fifty people donated paintings to sell for \$100 each, raising \$2600.
- Eight area team Chairpersons canvassed their areas to ask for donations, and \$11,661 was the preliminary outcome. The teams were thanked with a luncheon at the Gallery catered by yet another group of WAS-H volunteers.
- Teachers of classes, workshops, award winners, Demo artists and many others donated their fees and prizes to the Building Fund.
- Aprons were made and sold for the cause.
- Garage sales were planned, executed and repeated.

When we had to move and found ourselves at Town and Country needing the stability of a permanent home, a Capital Fund Drive was established. The Building Fund Drive was enveloped into the Capital Fund Drive. First order of business was to form a Steering Committee with the following list of people.

### Steering Committee

- W.J. Bowen, *Honorary Chairman*
- CEO, Transco Energy Company
- Roy Hughes, *Vice Chairman*
- The Consulting Group
- Richard D Kinder
- President Enron Corporation
- Matthew R. Simmons
- President Simmons & Company

- International
- Charles E. Foster
- Group President Southwestern Bell
- Mr. and Mrs. Jack Pardee,
- Coach Houston Oilers
- Dr. Faber McMullen, Jr. M.D.
- Mrs. Virgil Childress (Doris)

Within two weeks of organizing, commitments for over \$40,000 were received.

### Building Activity

Members Paul deGroot and Helen Peters Architects, were taking care of



city ordinances and such, supervising and transforming our 65-year-old building. Ordinances, fees, etc. taken care of, and with the downstairs finished and upstairs work to begin in October 1992.

Sylvia Cameron came to the rescue of the giant oak tree, which was in a bad way. If saved it would make WAS-H compliant with tree ordinance.

By January 1997 we had raised over \$210,000, bought a building valued at \$250,000 in a highly visible location in the Museum District, renovated the facility and paid all but \$30,000 of our mortgage, with \$10,000 still in our Building Fund. The fact excited enough members that they responded with \$2,000 to add

to our coffers.

In December of 1997, the Mortgage was retired in only four months.

### Points of Interest

During our many moves and transformations WAS-H prevailed and expanded.

The decade of the '90s was filled with innovative ways to grow — not inward, but outward.

Our monthly shows found their way into lobbies of downtown office buildings. Texas Art Supply was great to host workshops, exhibits and an auction dur

ing our transition.

WAS-H had three juried **Big Painting Exhibits** downtown.

WAS-H was instrumental in starting WATERFEST in 1993. It was proposed that all Houston galleries hang art watercolor exhibits during the month of July as an Art Walk. Seven galleries, three alternative spaces, one museum and one library have agreed to participate. Member Bill Watson agreed to design the common portion of the invitation. Individual artists could submit proposals for solo or group shows. The University of St. Thomas and the Jungman Branch Library approached us with interest in participating.

(continued on page 12)

## December Show Donations

by Parrish Hirasaki, Show Director  
WAS-H will have the holiday spirit in December. Entrants in the December Small Paintings Show will be contributing to the Make-A-Wish Foundation. In addition to the \$5-per-painting fee, each artist will pay a single \$5 registration fee, which will go straight to Make-A-Wish. WAS-H will also be donating a portion of its commissions from sales of the artwork in the show.

To donate directly to WAS-H, artists will have the option of putting artwork into a silent auction to be held during the Holiday Party. If the artwork is sold during the party, all the proceeds go to WAS-H. Again, this is optional. An artist may enter up to five paintings at \$5 each in the December Show and chose to put none, one or any number of the paintings in the Holiday Party Silent Auction.

Except for during the party, sale of the artwork will be as usual. To encourage gift buying, not only are the paintings small, but purchasers may take the artwork immediately.

### Here's how the silent auction will work:

- On the show registration form, the artist will mark any paintings to be included in the silent auction.
- The artist will set the minimum bid for each painting. Most make this amount less than the normal price for the painting.
- At the party, bidding will be open from 6:00 until 7:30 pm.
- Purchasers must pay by 8:00 pm, or the next highest bid wins.
- Payment will be to WAS-H by cash, check or credit card.
- Purchasers may take the artwork that night.

Read the Small Paintings Show prospectus carefully as the criteria are very different. The framed length and width must each be no more than 16 inches, no exceptions. Glass is allowed as well as colored mats and ornate frames. There are no restrictions on painting surface.

This has proved a fun way to shop for holiday gifts and to give a holiday gift to WAS-H. Last year, I used it as an opportunity to try new techniques on a small

scale. I bought frames with mats and glass on sale and painted to fit them. All my paintings sold in the auction. One even sparked a "bidding war." It was a great time. Put the party on your calendars Friday, December 10, and enter artwork in the show. ☺

## 34th WAS-H International Exhibition by Norm Wigington and JoEllen Harrison

Co-Directors WAS-H 2011 International Exhibition

Did you know that apart from being a watercolor painter, John Salminen is also a jazz saxophonist who played in a community concert band and for a 16-piece jazz band? Did you know he also pursued pastimes such as harvesting berries and trout fishing?

Knowing that John Salminen is arguably one of the most famous watercolorists alive today, how could anything be a secret in this modern age? Most recently, Salminen made international news when he participated in a watercolor exhibition in China. Salminen recently returned from Lushan, China, where he was the invited representative of the United States for the Lushan International Festival. He has said it was an astounding experience, with many Chinese Master Painters in attendance along with 4,000 high school and college students.

This year the 34th International Exhibition will have the honor of having John Salminen, a two-time WAS-H International Exhibition winner, as this year's juror. Salminen will also be conducting a workshop that will interest a national audience. In addition, Salminen was awarded the Skyledge First Place Award in the 2010 Transparent Watercolor Society of America Exhibition. He has been awarded the American Watercolor Society Gold Medal for the second time.

Salminen is a famously productive painter who paints six to 10 hours a day in a basement studio and after capturing his subjects with his camera. For more than 34 years, Salminen was a high school art teacher. Although he started

college as a music major, Salminen became enchanted by the art studio during his high school years. He painted while teaching high school students.

He and his wife, Kathy — who is also a teacher and a photographer and will be joining him here in Houston — dedicate their time to gather material by shooting photos on the streets of cities like New York and Chicago.

Salminen has won more than 190 awards in national and international exhibitions, including the AWS Gold Medal in both 2006 and 2010, the Silver Star first-place award in the National Watercolor Society Exhibition in 2005, the Silver Medal of Honor in the Allied Artists 2009 Exhibition and the Biennial Award in the Shanghai Zhujiyajiao International Watercolor Biennial in 2010. His work has been exhibited in the National Academy show in New York.

Salminen's demonstration during the International Exhibition will be featured at the Sunday, March 20, General Meeting, and his workshop will be held March 21-24, 2011. The 34th WAS-H International Exhibition will open March 19 and run until April 15, 2011. The opening reception honoring the award winners, the juror and all entrants will be held at the WAS-H Building on March 25th.

The International Exhibition entry deadline is January 29. The prospectus is available in this issue of the Washrag and online at the WAS-H Web site [www.watercolorhouston.org](http://www.watercolorhouston.org). For Houston-area residents, copies will be available at WAS-H, 1601 West Alabama, Houston, TX 77006-9966.

Look for more information in the Washrag as the deadline for the 34th WAS-H International Exhibition approaches. ☺

## December Photo Workshop Registration Deadline is November 20!



# December Gallery Show

Questions? Contact Parrish Hirasaki at 281-337-6121 or [parrish@alumni.duke.edu](mailto:parrish@alumni.duke.edu)

### Annual Small Paintings Show

**NOTE: TAKE-IN NOW ENDS AT 12:00 NOON.**

**Take-In: Saturday, December 4, 10:00 am – 12:00 noon**

**(Paintings can always be brought in before Saturday.)**

**Reception /Holiday Party: Friday, December 10, 6:00 pm**

**Pick up paintings: January 7 or 8, 10:00 am – 3:00 pm**

**Juror:** Katherine Veneman is Curator of Education at Blaffer Art Museum at the U of H. Katherine received her BA in fine arts and history summa cum laude from Amherst College and holds an MFA in painting from American University in Washington, DC. She has exhibited her work nationally. [www.katherineveneman.blogspot.com](http://www.katherineveneman.blogspot.com)

### Eligibility and Requirements

- Artist must be a current WAS-H member.
- Up to five entries per artist.
- Fee of \$5 per entry.
- Artwork Regulations:
  - Original composition.
  - Completed in the last 24 months.
  - Not painted under supervision or in a class.
  - At least 80% watermedia.
  - Surfaces: no restrictions.
  - Has not won a WAS-H award.
- Framing Regulations:
  - No restrictions on frame style or width of edge.
  - Any color of mats and liners.
  - Glass is allowed.
  - Paintings not to exceed 16" in height or width, frame included.
  - Frame widths 12" or less may use a different style of hanger than the wire required for larger work.

### Awards

- Cash awards for first \$100, second \$75, third \$50.
- Honorable Mentions awarded a ribbon – no cash.
- Only one award per artist.
- Winners are notified by phone.

### Silent Auction

- Work may be donated for Silent Auction (see article) to be held during the Holiday Party, December 10.
- Such work will be available for sale before and after the auction under the standard terms below.

### Sales

- WAS-H accepts a 20% donation for sale of artwork.
- Artwork may be taken when purchased.
- Artwork price is to include sales tax.
- A 5% fee is taken out of credit card sales.
- All sales include frames.

### Liability

WAS-H will not be liable for damage before, during or after the exhibit. Artwork that adheres to these guidelines will be accepted with the provision that WAS-H reserves the right to refuse any entries that are inappropriate for a family venue.

### Abbreviations

**Medium:** WC – watercolor, A – acrylic, G – gouache

**Surface:** P – paper, YP – Yupo, CB – Claybord, C-Canvas

Name \_\_\_\_\_

Email \_\_\_\_\_

Tel. (H) \_\_\_\_\_ (C) \_\_\_\_\_

Please add \$5 for Make-A-Wish to your total.

Title #1 \_\_\_\_\_

Price \_\_\_\_\_ Medium \_\_\_\_\_ Surface \_\_\_\_\_

If Silent Auction Entry, Minimum Bid \_\_\_\_\_

Title #2 \_\_\_\_\_

Price \_\_\_\_\_ Medium \_\_\_\_\_ Surface \_\_\_\_\_

If Silent Auction Entry, Minimum Bid \_\_\_\_\_

Title #3 \_\_\_\_\_

Price \_\_\_\_\_ Medium \_\_\_\_\_ Surface \_\_\_\_\_

If Silent Auction Entry, Minimum Bid \_\_\_\_\_

Title #4 \_\_\_\_\_

Price \_\_\_\_\_ Medium \_\_\_\_\_ Surface \_\_\_\_\_

If Silent Auction Entry, Minimum Bid \_\_\_\_\_

Title #5 \_\_\_\_\_

Price \_\_\_\_\_ Medium \_\_\_\_\_ Surface \_\_\_\_\_

If Silent Auction Entry, Minimum Bid \_\_\_\_\_

*I grant WAS-H permission to reproduce the artwork for publicity, documentary or educational purposes. I accept the terms of the prospectus and confirm that the artwork meets the stated regulations.*

Signature \_\_\_\_\_ Date \_\_\_\_\_

Attach this label or a facsimile to the back of each painting.

Name \_\_\_\_\_

Tel. (H) \_\_\_\_\_ (C) \_\_\_\_\_

Title \_\_\_\_\_

Price \_\_\_\_\_ Medium \_\_\_\_\_ Surface \_\_\_\_\_

Name \_\_\_\_\_

Tel. (H) \_\_\_\_\_ (C) \_\_\_\_\_

Title \_\_\_\_\_

Price \_\_\_\_\_ Medium \_\_\_\_\_ Surface \_\_\_\_\_

(The 90s at WAS-H, continued from page 9)



WATERFEST 1993 as the WAS-H International Competition Exhibition was at Transco Tower.

### What is WATERMEDIA 2000?

WAS-H was obligated to host the WFWS Annual Meeting in 2000 and that meant



Planning meeting in Dallas for WAS-H's WATERMEDIA 2000 Trade Expo Standing from the left: Lou Glist, WAS-H; Irene Gruen, American Artist Magazine; John Gilbreath, Texas Art Supply; Margaret Bock, WAS-H. Seated: Gail Fishback, American Artist Magazine, Nancy Dunn, Texas Art Supply.

that WAS-H would be mounting two major exhibits at the same time (our International Exhibition and the WFWS Annual Exhibit). The decision was made to go for broke and host six major exhibits at the same time since there were that many downtown venues available. One thing led to another and a trade expo was added to the menu.

National Trade Expos include: vendors of art supplies, art exhibits, workshops and lectures.

It was thought a National Trade Expo would be feasible for WAS-H to produce, so Glist and Bock returned to Houston full of ideas.

Publishing a 12-month calendar for Watermedia 2000 as a fund-raiser was decided upon. The plan was to have an open citywide contest for watercolorists, to celebrate Houston with their artist's perspective. The calendar was to be ready for purchase by October 1999.

A trolley-tour of downtown Houston was set up with Sandra Lord's Discover Houston to afford members a chance to view the wonderful sights to inspire paintings for the calendar.

Past president Jo Ann Miller put together a grant proposal to CACHH for WATERMEDIA 2000. ☺

## Paint-In

**Margaret Bock and Betty Frost**  
Paint-In Coordinators  
**Richard Linden – Saturday**  
**November 27, 9:30 am - 3:30 pm**



Landscape by Richard Linden

Richard Linden studied art and architecture at The University of Texas at Austin, where he learned watercolor painting. During the next three decades of architectural practice, he utilized watercolor painting as a means to illustrate project design proposals to his clientele.

As a member of the faculty in the College of Architecture, Texas Tech University, he taught undergraduate classes in design, watercolor painting and architectural illustration.

For the last decade, Dr. Linden has painted for leisure enjoyment. He has participated in the Lone Star Art League of Texas and is past president of the Northwest Art League of Houston. His work has been exhibited in galleries, libraries, hospitals, banks, churches and other institutional venues. He is a long-term member of WAS-H, a past member of the Galveston Art Society and the San Antonio Watercolor Society. His work has been recognized with numerous awards in juried competitions.

### About the Paint-In

The subjects of interest for the Paint-In are landscape and cityscape scenes displaying fall foliage and water reflections.

Participants will have an opportunity to complete several paintings and be exposed to a number of techniques for creating interesting pictures.

### Suggested materials:

Transparent and opaque watercolors  
Watercolor pencils (blue violet, raw sienna, white), Rough watercolor paper (4 quarter, sheets, 140 substance), Brushes (#6, 12 round, 1 1/2 flat, 3/4 or longer rigger, toothbrush and any other assorted brushes on hand), Drafting tape, Scissors, X-acto knife  
Bring any other materials you like to use in painting.

### 2010-2011 Paint-In Schedule

Dec. ....No Paint-In  
Jan. 22 .....Joanie Hughes  
Feb. 26 ....Nellie Kress ☺

## Paint-Out

### Mary Rustay

Paint-Out Chairman

Our November Paint-Out will be in Galveston at the vintage historic Galvez Hotel on November 20, 2010.

I have arranged for special overnight rates at the Hotel Galvez at \$99/night + tax, etc. for 2 DBL Beds or 1 Queen. One to four persons can share a room. I will be sending out reservation information with our special rate in a separate email. There is an art competition celebrating the 100th anniversary of the Galvez with an award of \$1000 for the winner. The winning painting will be auctioned off with proceeds going to the Historical Association of Galveston.

Save the date. You can come down for the day or the weekend. We are being given the use of a meeting room to gather on Saturday, if not painting, from 10 am - 10 pm. Do not miss out on this rare opportunity to paint a winner. Plan to paint all day Saturday at the Galvez, and use Friday and Sunday to drive around and take photos or paint elsewhere. Sounds soooooo fun.

Please email or call me of your interest ASAP. 713-965-9393- H, 713-965-0812, ext. 1668- W, 713-703-1533- Cell, [rustay@heritagetexas.com](mailto:rustay@heritagetexas.com) - W or [rustgeo@aol.com](mailto:rustgeo@aol.com) - H ☺

# ART ALIVE FOR 35





A monthly publication of the

**Watercolor Art Society - Houston**

1601 W. Alabama at Mandell, Houston, TX 77006

713•942•9966 • [www.watercolorhouston.org](http://www.watercolorhouston.org)

NON PROFIT  
ORGANIZATION  
U. S. POSTAGE  
**PAID**  
HOUSTON, TEXAS  
PERMIT NO. 2169

This page is blank.

## VerdantMedia

### ***Fine Art Giclée Printing***

- Highest quality fine art printer
- Archival inks, paper & canvas
- Ultra high-res Scitex® scanning
- No minimum orders
- Matting & framing services
- Canvas stretching & sealing
- Warm, personal attention
- A collaborative working environment

**Call Sid today at (713) 688-9205  
to schedule your appointment!**

5401 Mitchelldale, Suite A-2  
Houston, Texas 77092  
<http://www.verdantmedia.com>

**We Offer a 20% DISCOUNT  
To All WAS-H Members!**



**ART**  
SUPPLY  
ON MAIN  
2711 Main St.  
Houston, TX  
77002

If you need  
more directions  
Please call

**ART SUPPLY**  
(713) 652-5028

**email vikki: [artsupply@swbell.net](mailto:artsupply@swbell.net)**